

The Strawberry Plant



M. Elena Garcia- Horticulture Professor

Strawberry Plant

- Basic understanding the biology of the strawberry plant will help growers to be more successful in their strawberry production systems



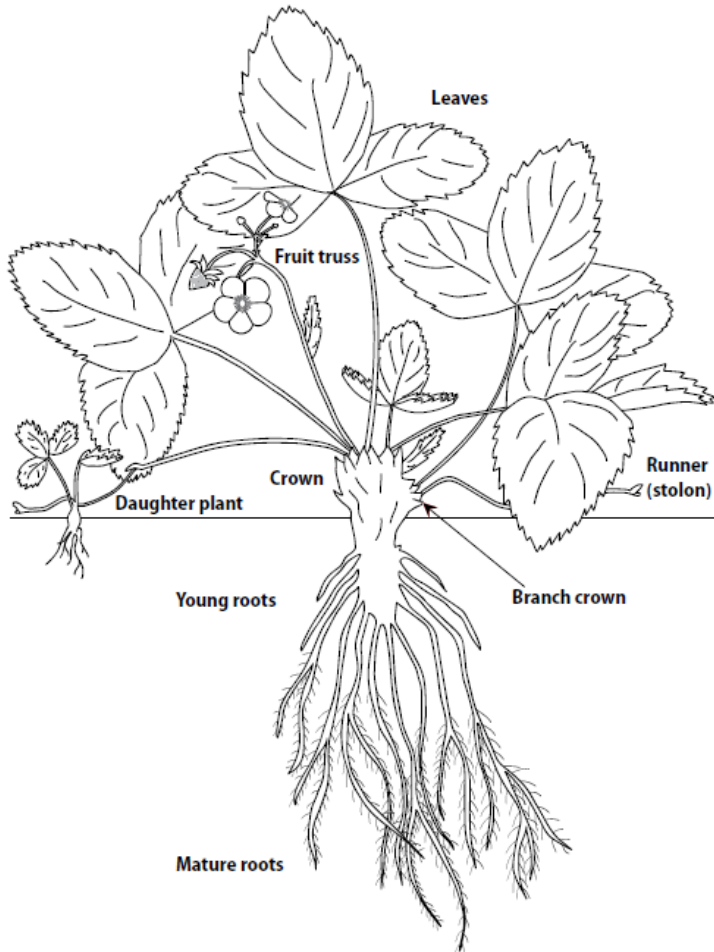
The Plant

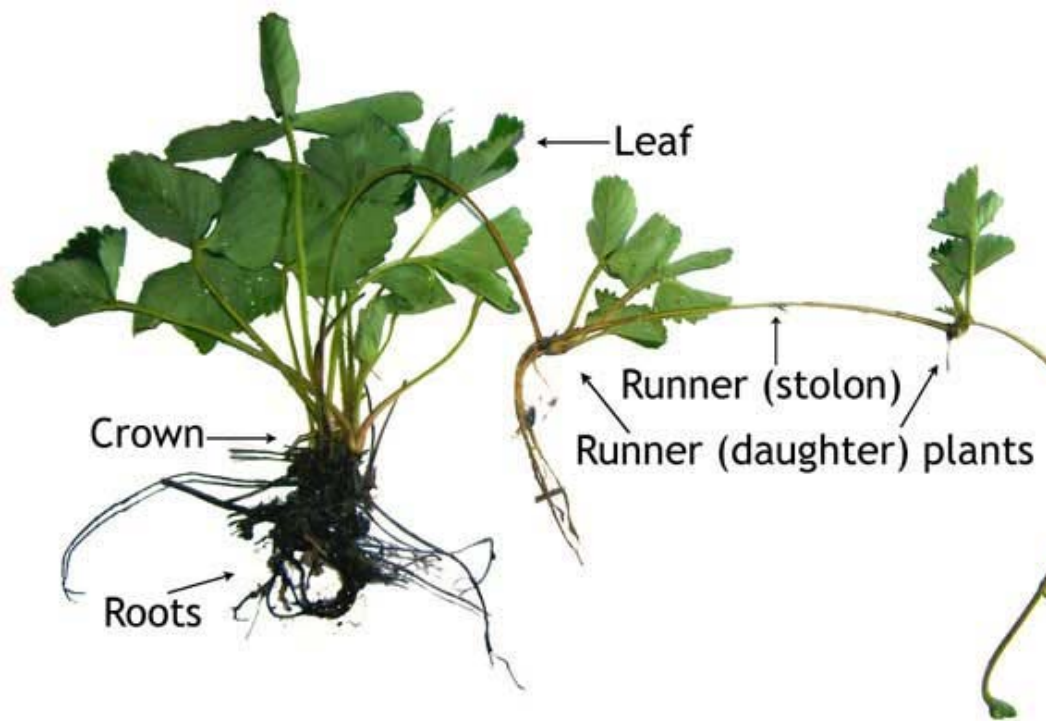
The strawberry plant is a non-woody perennial plant

- It has a structure called a crown

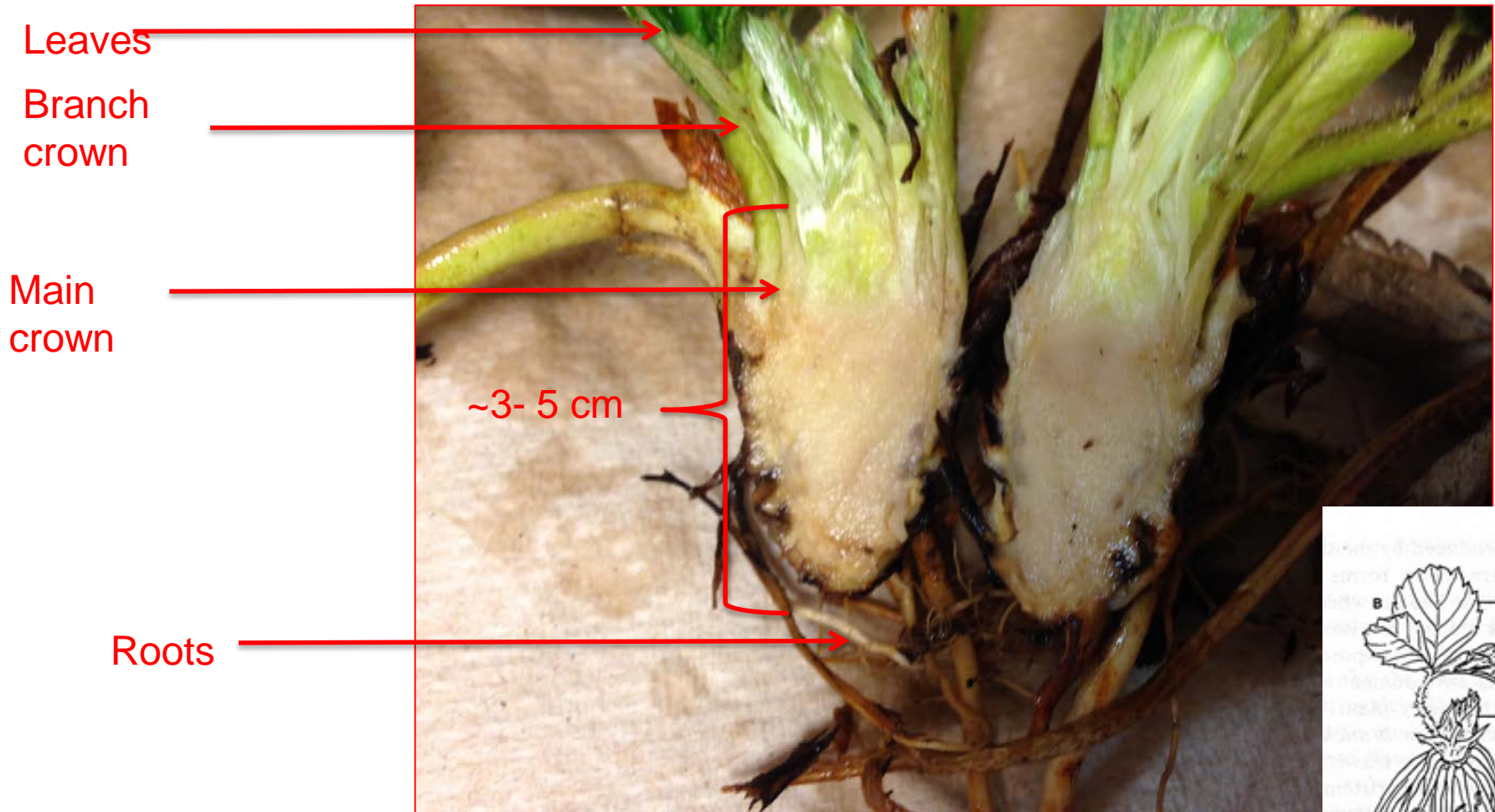
From this crown the following organs arise

- Leaves
- Flowers (later fruit)
- Stolons- runners
- Root system



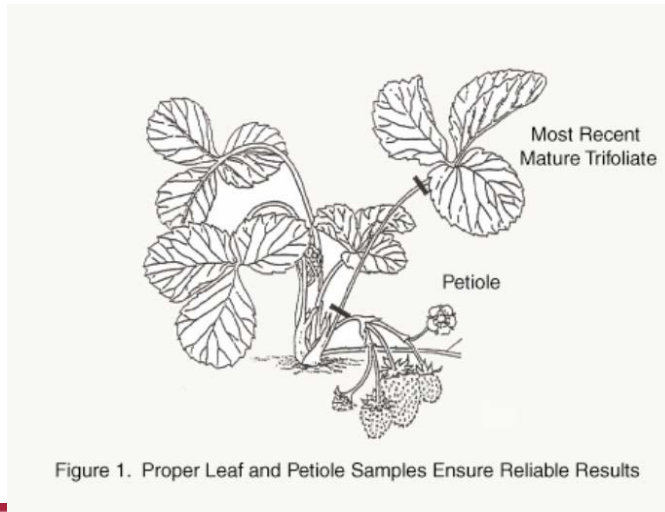


The Crown: A Cross Section



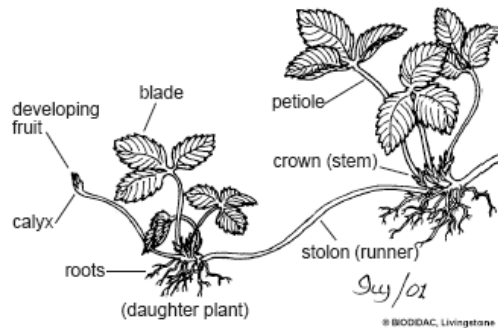
Leaves

- Compound pinnate and trifoliate
 - Three leaflets
 - Live a few months



Stolons or Runners

- Stolon: Above ground stem
- A means for asexual plant propagation
- Each stolon can produce new stolons (daughter plants)
- “Mother” plant can transfer water, nutrients, and assimilates to “daughter” plant from several weeks to years



Roots

- Roots- from the base of leaves on the crown
 - primary roots live for up to one year
 - 50-90% of roots are in the upper 6" of the soil



Flowers

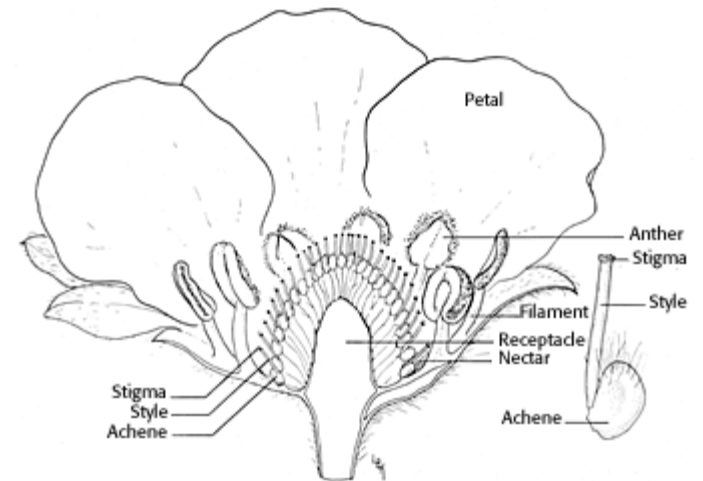


Figure 177. - Longitudinal section of 'Tioga' strawberry, x7, with individual achene and style, x35.

Male and female parts in the same flower
Require a pollination agent (insects or wind)

Photoperiod

- The developmental responses of plants to the relative lengths of the light and dark periods
 - timing of both the light and dark periods

Photoperiod

- Strawberry cultivars vary greatly in the expression of repeat flowering
- Strawberry cultivars traditionally have been classified into photoperiodic response groups for flowering
- However, since 1936 the influence of temperature on flower initiation in strawberry was noted

Strawberry Flowering Types

- Short day plants (June bearer)
 - Initiate flowers when photoperiod <14 hr
 - Chandler
- Long day plants
 - Require photoperiods > 12hrs
 - Not used commercially
- Day neutral (Ever bearer)
 - photoperiods 9 to 16 hrs
 - Albion

Buying Plants

Tips- from runners



Plugs-live



Bare root- dormant plants



Questions?

